

# K-W VOTES

## Provincial Election - June 12<sup>th</sup>

Increasing Equality  
Framework for Successful Poverty Reduction Outcomes

# Party Platforms

Support to all low-income people and families for a range of needs

Criteria 1: Adequate income to support well-being and health

Criteria 2: Support to all low-income people for a range of needs

Criteria 3: People are treated with dignity and respect in service delivery

Criteria 4: Greater accessibility to and navigation of the system

Criteria 5: Fair employment standards and policies

Criteria 6: Integrated service systems at all orders of government

Criteria 7: Underlying assumptions and philosophy of system plans and reforms are not blaming or punitive

Criteria 8: Accessible and meaningful ways to participate in planning and decision making

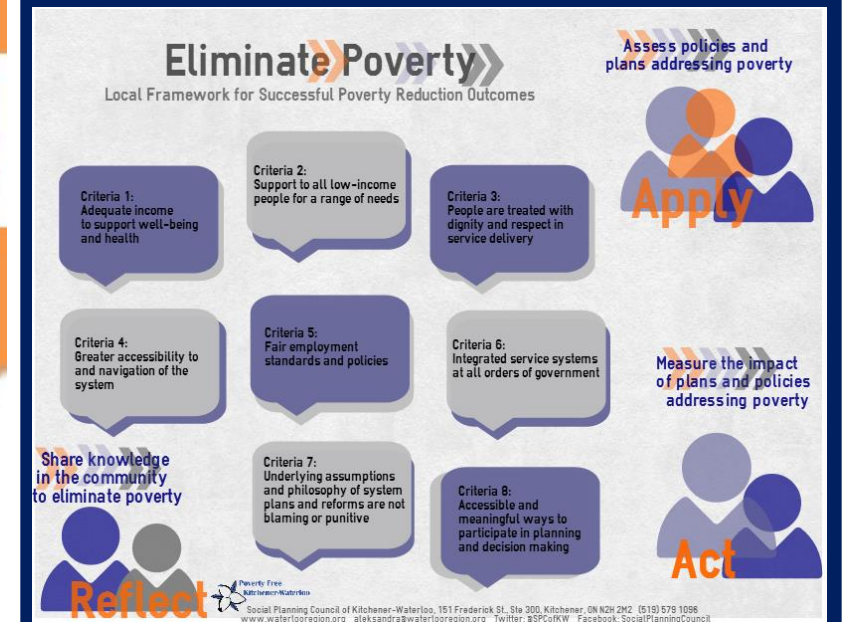
Measure the impact of plans and policies addressing poverty

**green**  
PARTY OF ONTARIO

**Social Planning Council of Kitchener-Waterloo Community Information Centre of Waterloo Region**

**Poverty Free Kitchener-Waterloo**

## Social Issues & Poverty Elimination



The Green Party platform has been looked at through the lens of the Local Framework for Successful Poverty Reduction Outcomes. The criteria have been developed through community consultations in K-W.

| Local Criteria      | Proposed Policies and Strategies   | Targets and Measures<br>(in progress)  | Criteria<br>Addressed in Platform  | Related Platform Items |
|---------------------|--|--|--|------------------------|
| 1 - ADEQUATE INCOME | <p><b>Increase assistance levels</b></p> <p><b>Short term (2009) - \$100/month increase to all single adult recipients</b> (not to paid for by decreasing other benefits)</p> <p><b>Labour laws</b> enforced</p> | <p>Social Assistance Rates: all recipients out of deep poverty (min 80% of the Ontario Low Income Measure) -- indexed</p> <p>Minimum wage: min 10% above Low Income Measure so that all full-time, full-year workers earn income bringing them above the poverty line -- indexed</p> <p>Living wages</p> | <p>Increase the minimum wage in the short term – in the long term institute a Guaranteed Annual Income (GAI) – 2014 budget to include a public commission to determine how to implement GAI in Ontario</p> |                        |

| Local Criteria   | Proposed Policies and Strategies   | Targets and Measures<br>(in progress) | Criteria<br>Addressed in Platform  | Related Platform Items   |
|--|--|---------------------------------------|--|--|
| <b>2 - SUPPORT TO ALL LOW-INCOME PEOPLE FOR A RANGE OF NEEDS</b> | <p><b>Child Benefit</b> – increase annual maximum</p> <p><b>Child Benefit and Social Assistance</b> End dollar-for-dollar deductions of child support from the benefits of single parents receiving OW and ODSP</p> <p><b>Family Members of people on ODSP</b> – do not freeze their social assistance rates</p> <p><b>Discretionary Benefits</b> – raise cap to \$15 per person</p> <p><b>Reinstate CSMUB funding level for CHPI</b></p> <p><b>Investment in Housing and Homelessness Prevention Program</b></p> <p><b>Universal Health, Drug prescription and Dental program</b></p> <p><b>Raise income threshold for legal aid assistance eligibility.</b></p> <p><b>Tuition reductions</b> – reinstitute post-secondary grant program to reduce student debt loads</p> <p><b>Transportation subsidies.</b></p> <p><b>Support public internet access, support and training.</b></p> |                                       | <p>Double the Ontario Child Benefit for children of families who live close to the poverty line.</p> | <p>Dedicated transit fund--one that politicians can't waste on things like moving gas plants--to build new transit and support the operation of existing transit.</p> <p>Provide grants up to \$4,000 for homeowners to invest in energy conservation. We will also propose legislation requiring local utilities to provide affordable loans for you to retrofit your home.</p> |

| Local Criteria  | Proposed Policies and Strategies  | Targets and Measures (in progress)   | Criteria Addressed in Platform | Related Platform Items |
|---|---|--|--------------------------------|------------------------|
| <b>3 - DIGNITY AND RESPECT IN SERVICE DELIVERY</b>            | People are treated with dignity and respect when receiving help.  | Collect feedback from service recipients on an ongoing basis to ask if recipients: <ul style="list-style-type: none"> <li>• feel heard before they apply</li> <li>• are supported when they apply</li> <li>• treated as a partner when getting assistance</li> <li>• feel safe when they leave assistance</li> </ul> |                                |                        |
| <b>4 - GREATER ACCESSIBILITY AND NAVIGATION OF THE SYSTEM</b> | <p><b>Adequate resources for case workers to do their job</b> - <i>Extra funding in times of any transition</i></p> <p><b>Provide drop ins</b>, not only by appointment</p> <p><b>Relationship and trust building</b></p> <ul style="list-style-type: none"> <li>• Well trained staff</li> <li>• Stable staff contacts</li> <li>• Timely responses</li> <li>• Flexibility in working with people with different needs</li> <li>• Meaningful follow-up</li> </ul> <p><b>Provide system navigator and advocacy support</b></p> <p><b>Improve the appeal process</b></p> | Collect feedback from service recipients on an ongoing basis<br><br>External reviews of forms and processes<br><br>Eliminate administration errors that impact recipients e.g. lost documents; overpayments.   |                                |                        |

| Local Criteria  | Proposed Policies and Strategies   | Targets and Measures (in progress)  | Criteria Addressed in Platform | Related Platform Items   |
|---|--|---|--------------------------------|--|
| <b>5 - FAIR LABOUR MARKET, PRACTICES AND EMPLOYMENT POLICIES</b>  | <p><b>Training, job readiness and retention strategies</b> to increase labour market flexibility and support for social assistance recipients e.g. flexible work hours for people with different abilities and on-the- job support</p> <p><b>Monitoring (and enforcement ?) of labor standards</b></p> <p><b>Regulating temporary employment agencies</b></p> <p><b>Support union</b> organizing and collective bargaining</p> <p><b>Policies for social assistance recipient volunteer participation</b> to recognize non-employment related contributions for those unable to participate in the workforce</p> | Self-reported experience of social assistance recipients and those who have transitioned to work and are no longer receiving assistance   |                                | <p>Social Innovation Foundation to provide grants, loans, and mentorship to help young entrepreneurs invent and implement solutions to problems we face.</p> <p>Lower payroll taxes on small business- double the Employer Health Tax exemption from \$450,000 to \$900,000 for businesses with payrolls of less than \$5 million.</p> |
| <b>6 - INTEGRATED SERVICE SYSTEMS AT ALL LEVELS OF GOVERNMENT</b> | <b>Integrated plans and programs-</b> Cross ministry and inter-government harmonization  | <ul style="list-style-type: none"> <li>• External review of policies, programs, budgets</li> <li>• Adequate funding levels based on local needs</li> <li>• Services are not reduced.</li> <li>• Income supports reduce income inequality</li> <li>• Integrated policies to guide investments that help people find and keep</li> <li>• decent work</li> </ul> |                                |  |

| Local Criteria  | Proposed Policies and Strategies   | Targets and Measures<br>(in progress) | Criteria<br>Addressed in Platform | Related Platform Items |
|---|--|---------------------------------------|-----------------------------------|------------------------|
| <b>7 - UNDERLYING ASSUMPTIONS AND PHILOSOPHY OF THE SYSTEM</b>              | Plans, policies and programs do not reflect: <ul style="list-style-type: none"> <li>Negative and judgemental attitudes e.g. stereotypes of lazy welfare bums</li> <li>Emphasis on fraud prevention</li> </ul>  |                                       |                                   |                        |
| <b>8 - ACCESSIBLE AND MEANINGFUL WAYS TO PARTICIPATE IN DECISION MAKING</b> | <p><b>Inform people in an accessible and timely manner</b> about issues that are important – adapt processes to reach a diversity of voices.</p> <p><b>Take people’s viewpoints into consideration</b> on an ongoing basis and listen to their input.</p> <p><b>Provide consultation reports</b> that reflect what was said and which include follow up on action and timelines</p> <p><b>Take pace into consideration</b> in two ways – not too slow and not to fast:</p> <ol style="list-style-type: none"> <li>Timely follow up on past issues such as raising social assistance rates or minimum wage and not dragging with unnecessary consultations, and</li> <li>Sufficient time and support provided for understanding of new or more technical issues such as the functioning of a government Advisory Panel on Minimum Wage, etc.</li> </ol> <p><b>Invest in local mediating bodies</b> (such as community based social planning councils) to engage and facilitate participation.</p> |                                       |                                   |                        |

